



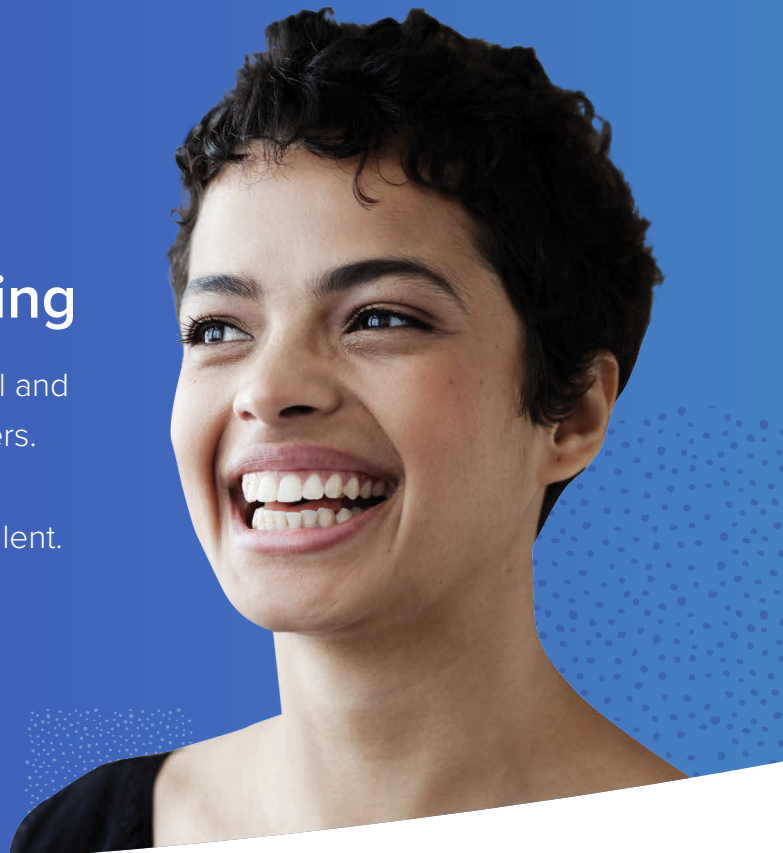
Powering Your Next Generation College Recruiting

The journey from college to career isn't transactional and students are becoming increasingly savvy job-seekers. Employers need to adapt and enhance their legacy approach to college recruiting to engage the right talent.



100%

of the Fortune 500
rely on Handshake



Handshake helps you source, engage, and hire the right talent for your team, wherever they may be.

4M+ Active Early Talent

The largest student career network

Rich, university-validated student profiles. Over 95M job views in 2018.

800+ Colleges and Universities

Career center system of record

The connection point for you to schedule on-campus interviews, register for career fairs, and set up your own events.

380K Employers

One unified platform

One central place to reach all schools and holistically manage all college recruiting.

Companies of all sizes rely on Handshake





Build your best, most diverse team with Handshake

Essentials

Proactively grow your early career talent program

- ✓ Advanced Search Filters
- ✓ Bulk Messaging (5,000/season)
- ✓ Company Branded Presence
- ✓ Message Results
- ✓ Onboarding & Online Support Resources
- ✓ 3 User Licenses

Professional

Scale your engagement and brand with the Talent Engagement Suite

- ✓ Essentials, plus...
- ✓ Dynamic Segments
- ✓ Customized Branding
- ✓ Smart Campaigns
- ✓ Talent Analytics
- ✓ Customer Success team, with regular training, check-ins & QBRs

Enterprise



The most innovative early talent solution across the whole organization

- ✓ Professional, plus...
- ✓ Advanced Analytics & Benchmarking
- ✓ Dedicated Handshake Advisor and team
- ✓ D&I Strategy & Advisory
- ✓ API Access, SSO
- ✓ Custom MSA

Level up your program with these add-ons



Event Check-In

Intelligently track and follow up with attendees



Handshake Insights

Leverage data to drive smarter decisions

Handshake Core is free to all users and includes the ability to post to a nationwide network of over 800 schools, collect and manage applicants, and attend and host career fairs and events.

Handshake's premium partners are achieving exceptional engagement

60%+

of virtual event attendees were part of diversity & inclusion-focused organizations

161%

increase in qualified applications from proactive engagement

33x

expansion in reach outside of local schools

Partner with our experts to drive your program success.

joinhandshake.com/employers | employers@joinhandshake.com